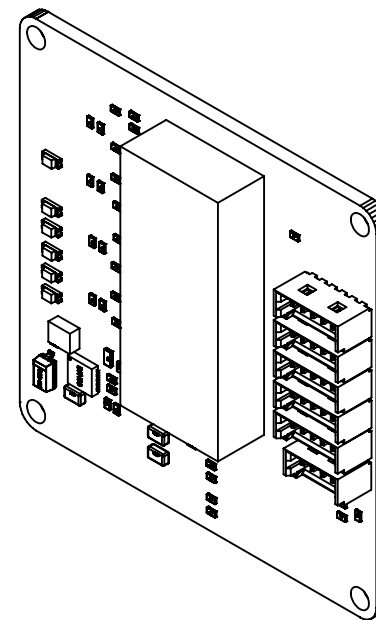
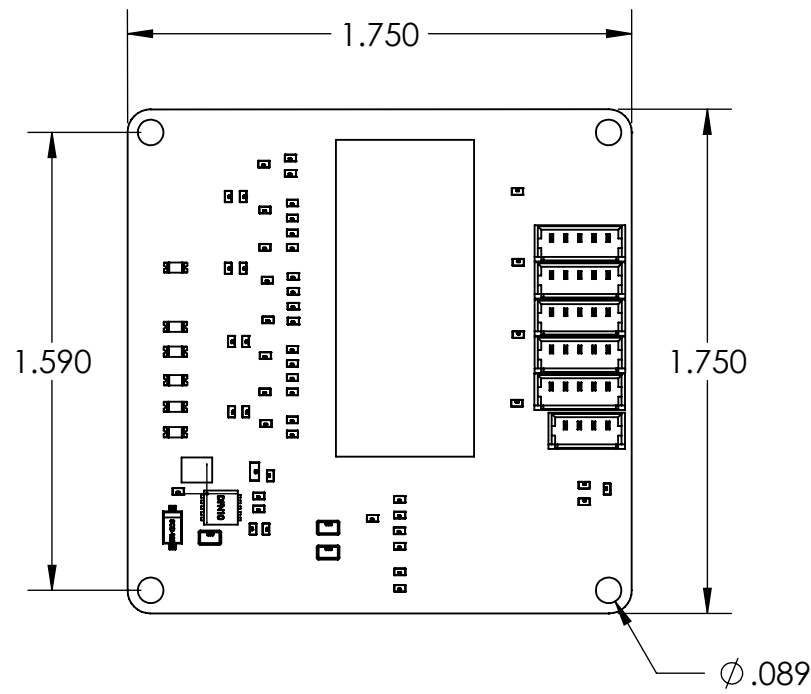
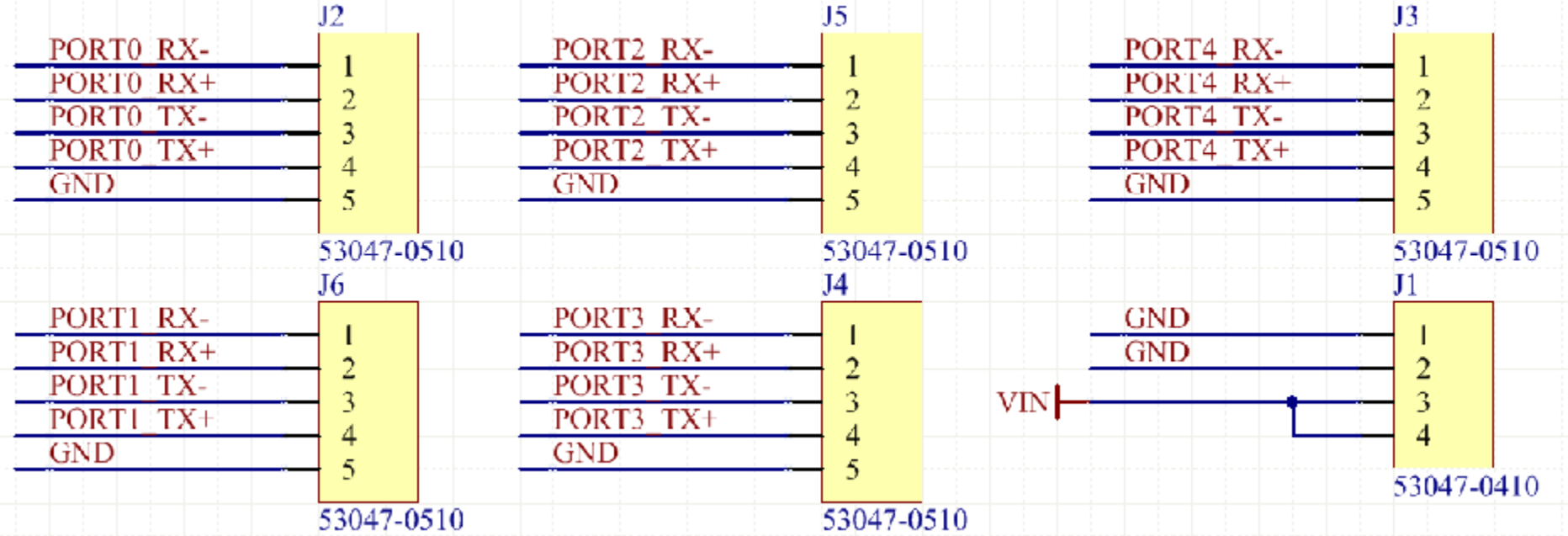


External Connectors, one for each port, one for power and ground



Size: 1.30 in³
Weight: 15g
Input Voltage 5-15 VDC

Note: The Ethos board can provide 3.3V external voltage output. It is recommended to stay below 1 Amp current draw

Power Usage Ports Used:

- 0: 0.5W**
- 1: 0.75W**
- 2: 1W**
- 3: 1.25 W**
- 4: 1.5 W**
- 5: 1.75 W**

PROPRIETARY AND CONFIDENTIAL
 THE INFORMATION CONTAINED IN THIS DOCUMENT IS THE SOLE PROPERTY OF GADGETSMYTH. INCIDENTAL REPRODUCTION FOR THE END USER'S INTERNAL USE IS ALLOWED. ALL OTHER REPRODUCTION AND/OR DISSEMINATION IS PROHIBITED WITHOUT THE PRIOR WRITTEN CONSENT OF IMSAR.

UNLESS OTHERWISE SPECIFIED:		NAME	DATE	Gadgetsmyth LLC 568 E. 130 S. SALEM, UT 84653 TITLE: Ethos Lite Ethernet Switch Drawing	
DIMENSIONS ARE IN INCHES		DRAWN	JH		1/11/2014
TOLERANCES:		CHECKED	X		X
FRACTIONAL ± 1/8		ENG APPR.	X		X
DECIMAL .XX ±0.01 .XXX ±0.005		MFG APPR.	X	X	
ANGLES ±1°		COMMENTS:			
DO NOT SCALE DRAWING					
MATERIAL					
THIRD ANGLE PROJECTION					
				SIZE B DWG. NO. ACS-ETH0-13-ICD REV 1	
				SCALE: 3:2 SHEET 1 OF 1	

