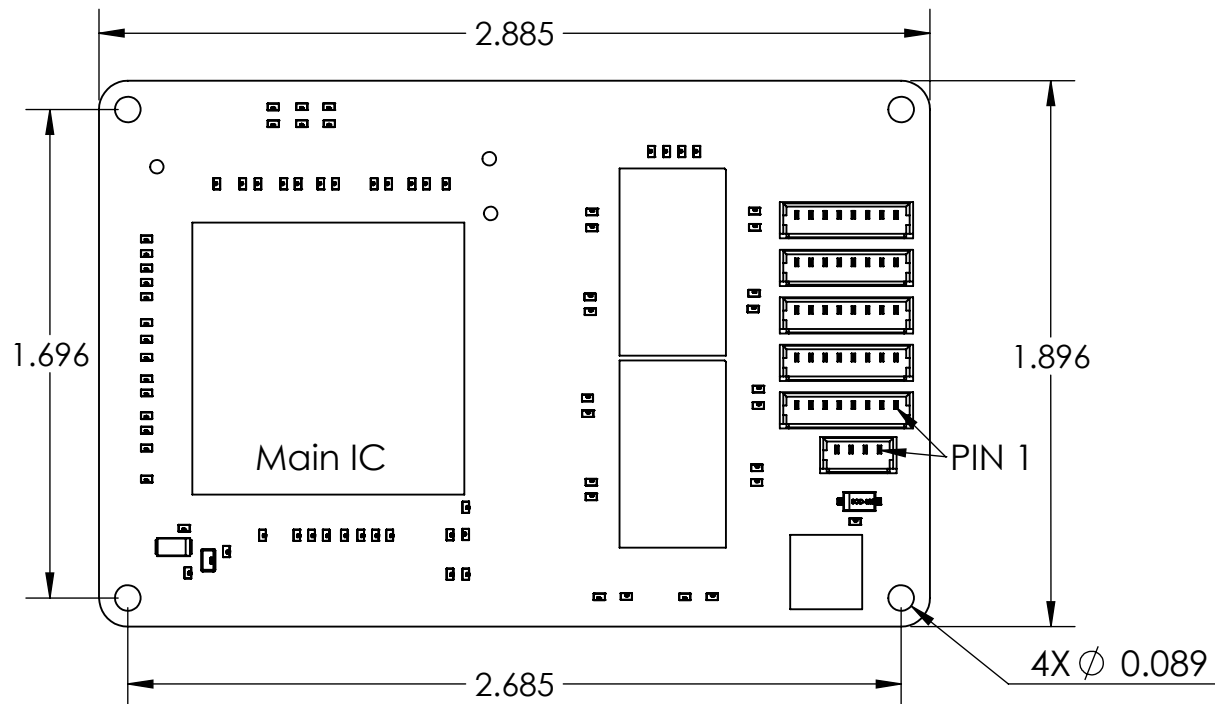
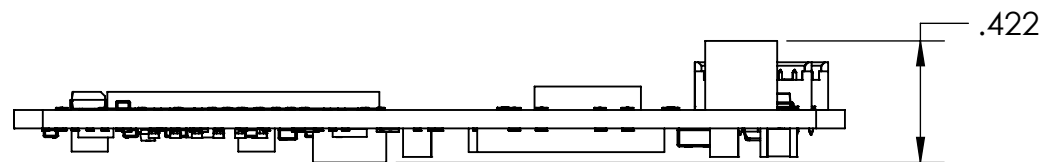
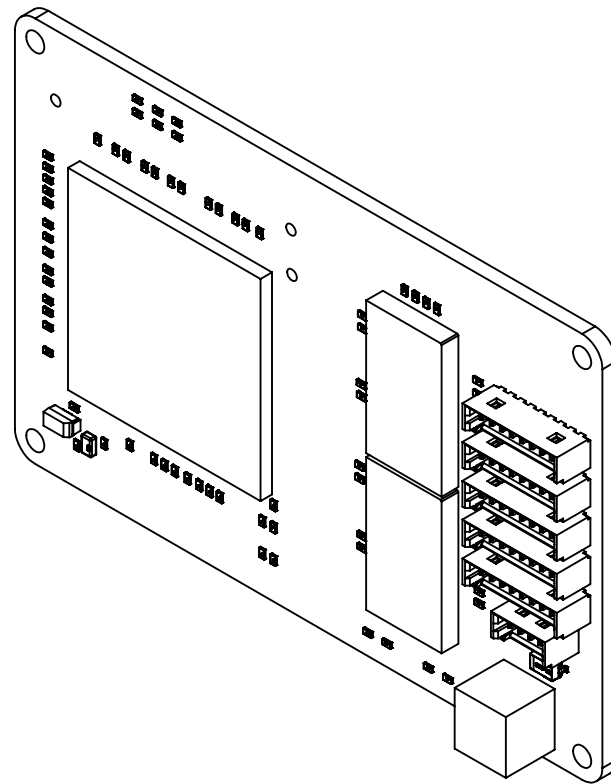


The main IC Junction temperature must be limited to 125°C. Thermal resistance from the junction to the case top is 7.6°C/W. Thermal resistance from the junction to the case bottom is 10.0°C/W.

Heat sinking may be required in some applications with high load and inadequate air flow. This may be accomplished by using a ~0.3" x 0.3" gap pad and heat sink in the area indicated, or by applying a heat sink to the top center of the main IC.



5X Ethernet Ports		
Mating Molex Connector: 0510210800		
1	TP3 P	RJ45 P7
2	TP3 N	RJ45 P8
3	TP2 P	RJ45 P4
4	TP2 N	RJ45 P5
5	TP1 P	RJ45 P3
6	TP1 N	RJ45 P6
7	TP0 P	RJ45 P1
8	TP0 N	RJ45 P2

Power		
Mating Molex Connector: 0510210400		
1	GND	
2	GND	
3	VIN	4-42 VDC
4	VIN	

Ports In Use	Power Usage (Watts)
0	0.5
1	1.2
2	1.8
3	2.4
4	3
5	3.8

Size: 2.1 in<sup>3</sup>  
Weight: 25g

UNLESS OTHERWISE SPECIFIED: DIMENSIONS ARE IN INCHES TOLERANCES: FRACTIONAL ± 1/8 DECIMAL .XX ± 0.01 .XXX ± 0.005 ANGLES ± 1° DO NOT SCALE DRAWING	DRAWN	LM	7/5/2018	Gadgetsmyth LLC 1134 South 1680 West Orem UT, 84058
	CHECKED	JH	7/5/2018	
MATERIAL	COMMENTS:			TITLE: <b>GigEthos Lite Ethernet Switch Drawing</b>
THIRD ANGLE PROJECTION				SIZE <b>B</b> ACS-ETH1-10-ICD RevD
				SCALE: 3:2 SHEET 1 OF 1

**PROPRIETARY AND CONFIDENTIAL**  
THE INFORMATION CONTAINED IN THIS DOCUMENT IS THE SOLE PROPERTY OF GADGETSMYTH. INCIDENTAL REPRODUCTION FOR THE END USER'S INTERNAL USE IS ALLOWED. ALL OTHER REPRODUCTION AND/OR DISSEMINATION IS PROHIBITED WITHOUT THE PRIOR WRITTEN CONSENT OF GADGETSMYTH.